





Nakita is a sportswear and fashion garment manufacturing company that has been constructing garments for some of the most renowned names in Western Canada. For the last 15 years, Nakita has been the manufacturer of choice for Umbro Canada and have now released their own line of exclusive team wear.

Occupying over 10,000 square feet in the heart of the garment manufacturing district in Vancouver, British Columbia, Nakita employs committed staff members that are carefully selected and frequently trained to achieve the industries highest level of craftsmanship and quality control.

Inspired by passion. Dedicated to Innovation, Nakita has been exceeding the expectations of soccer players for more than a decade. Both amateur and professional athletes recognize a commitment to technical, comfortable and quality garments. Nakita's sport specific fabrics have the technology and durability the sport demands without the high prices of other brands.

Nakita is fuelled by the athletes who play the game. As their skills evolve and push the sport to new levels, Nakita responds with the most innovative products. This team wear line is a result of this commitment and listening to the athlete at all levels.

## PRODUCT SIZE CHART

JACKETS				
YOUTH	-	YM (AGE 6-8)	YL (8-10)	YXL (10-12)
Player's Chest	-	28/30"	30/32"	32/34"
Jacket Length	-	20/22"	22/24"	24/26"
ADULT	S	M	L	XL
Player's Chest	34/36"	38/40"	42/44"	46/48"
Jacket Length	26/28"	27/29"	28/30"	29/31"
WOMEN'S	WS (SIZE 4-6)	WM (8-10)	WL (12-14)	WXL (14-16)
Player's Chest	34/36"	38/40"	42/44"	-
Jacket Length	22/24"	24/26"	26/28"	-

PANTS				
YOUTH	-	YM (AGE 6-8)	YL (8-10)	YXL (10-12)
Player's Waist	-	22/24"	24/26"	25/27"
Player's Hip	-	32/34"	36/38"	37/39"
Pant Inseam	-	23/24"	25/26"	27/28"
ADULT	S	M	L	XL
Player's Waist	26/28"	30/32"	34/36"	38/40"
Player's Hip	38/40"	41/43"	44/46"	47/49"
Pant Inseam	28/29"	29/30"	30/31"	31/32"
WOMEN'S	WS (SIZE 4-6)	WM (8-10)	WL (12-14)	WXL (14-16)
Player's Waist	24/26"	26/28"	28/30"	-
Player's Hip	34/36"	38/40"	42/44"	-
Pant Inseam	28/29"	29/30"	30/31"	-

JERSEYS				
YOUTH	-	YM (AGE 6-8)	YL (8-10)	YXL (10-12)
Player's Chest	-	28/30"	30/32"	32/34"
Jersey Length	-	22/24"	24/26"	26/28"
ADULT	S	M	L	XL
Player's Chest	34/36"	38/40"	42/44"	46/48"
Jersey Length	27/29"	28/30"	29/31"	30/32"
WOMEN'S	WS (SIZE 4-6)	WM (8-10)	WL (12-14)	WXL (14-16)
Player's Chest	32/34"	36/38"	40/42"	44/46"
Jersey Length	24/26"	25/27"	26/28"	27/29"

SHORTS				
YOUTH	-	YM (AGE 6-8)	YL (8-10)	YXL (10-12)
Player's Waist	-	22/24"	24/26"	25/27"
Player's Hip	-	32/34"	36/38"	37/39"
ADULT	S	M	L	XL
Player's Waist	26/28"	30/32"	34/36"	38/40"
Player's Hip	38/40"	41/43"	44/46"	47/49"
WOMEN'S	WS (SIZE 4-6)	WM (8-10)	WL (12-14)	WXL (14-16)
Player's Waist	24/26"	26/28"	28/30"	30/32"
Player's Hip	34/36"	38/40"	42/44"	46/48"

Note: Measurement and ages are approximate only

## DEPORTIVO



- \* 100% polyester "Shadow Stripe" jacquard
- \* Aqua-duct moisture management treatment
- \* Two color self fabric collar
- \* Contrasting piping trim accenting "Mini-Mesh" inset panels
- \* Flocked Logo

### COLORS

WHF – White/Forest  
 FOW – Forest/White  
 WHN – White/Navy  
 NWW – Navy/White  
 WHS – White/Scarlet  
 SLW – Scarlet/White  
 WHR – White/Royal  
 ROW – Royal/White

### CODE

0101  
 0102

### SIZE

ADULT s, m, l, xl  
 YOUTH ys, ym, yl, yxl

## MANCHESTER



- \* 100% polyester "Chelsea Stripe" jacquard with Akwatek moisture management finish
- \* Contrast matte eyelet underarm panels
- \* Coordinated V-neck with collar and sleeve bands
- \* Contrasting flat lock topstitching detail on all seams
- \* Flocked Logo

### COLORS

NWS – Navy/White/Scarlet  
 WRB – White/Royal/Black  
 RWB – Royal/White/Black  
 WSB – White/Scarlet/Black  
 SWB – Scarlet/White/Black  
 WBB – White/Black/Black

### CODE

0103  
 0104  
 0170

### SIZE

ADULT s, m, l, xl  
 YOUTH ym, yl, yxl  
 WOMAN  
 ws, wrm, wl, wxl

## REAL



- \* 100% polyester "Shiny Eyelet" jacquard
- \* Curved inset panels
- \* One button V-placket
- \* Coordinated ribbed collar and cuffs
- \* Flocked Logo



### COLORS

FBW – Forest/Black/White  
 GRW – Gold/Royal/White  
 NSW – Navy/Scarlet/White  
 RBW – Royal/Black/White  
 SBW – Scarlet/Black/White  
 WBS – White/Black/Scarlet

### CODE

0105  
 0106

### SIZE

ADULT s, m, l, xl  
 YOUTH ys, ym, yl, yxl

## FUSION



- \* 100% polyester "Herringbone" jacquard
- \* Tri-paneled pieced sleeve construction
- \* Tricolor shawl collar
- \* Contrasting inset side panel
- \* Front chest Flocked Logo



### COLORS

FBW – Forest/Black/White  
 GBW – Gold/Black/White  
 RGW – Royal/Gold/White  
 SBW – Scarlet/Black/White  
 WRS – White/Royal/Scarlet

### CODE

0107  
 0108

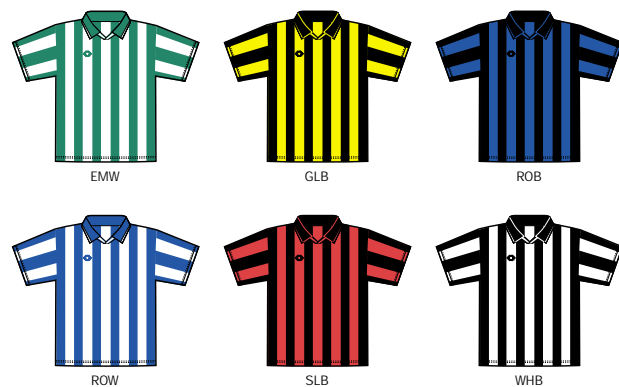
### SIZE

ADULT s, m, l, xl  
 YOUTH ys, ym, yl, yxl

## MILANO



- \* Classic International stripe pattern on matte 100% polyester jacquard
- \* Crossover V-neck style with Johnny collar
- \* Flocked Logo



### COLORS

EMW – Emerald/White  
 GLB – Gold/Black  
 ROB – Royal/Black  
 ROW – Royal/White  
 SLB – Scarlet/Black  
 WHB – White/Black

### CODE

0109  
 0110

### SIZE

ADULT s, m, l, xl  
 YOUTH ys, ym, yl, yxl



## TORNEO



- \* Duraweight 100% polyester "Pinstripe" jacquard
- \* Tricolor construction with contrasting sleeves and shoulder inset
- \* Two color style self fabric V-neck collar
- \* Flocked Logo



EBW

FBW

GBW

RBW



SBW

WRB

WSB

### COLORS

EBW – Emerald/Black/White  
 FBW – Forest/Black/White  
 GBW – Gold/Black/White  
 RBW – Royal/Black/White  
 SBW – Scarlet/Black/White  
 WRB – White/Royal/Black  
 WSB – White/Scarlet/Black

### CODE

0111  
 0112

### SIZE

ADULT s, m, l, xl  
 YOUTH ys, ym, yl, yxl

## SICILY



- \* 100% polyester matte eyelet with moisture management (wick-away treated fabric)
- \* Matching flat lock topstitching detail on seams
- \* Matching self V-neck
- \* Flocked Logo



LIM



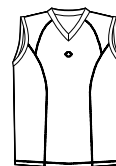
SIL



BLK



ROY



WHT



SCR

### COLORS

LIM – Lime  
 SIL – Silver  
 BLK – Black  
 ROY – Royal  
 WHT – White  
 SCR – Scarlet

### CODE

0125

### SIZE

ADULT s, m, l, xl

## SANTOS



- \* 100% polyester "Shiny Eyelet" jacquard with tri-panel contrasting side insets
- \* Raglan style sleeves with a 1x1 rib V-neck
- \* Flocked Logo



EBW

SBW

GLR

SLW

NTW



WRB

NWW

ROW

SNW

WSB

### COLORS

EBW – Emerald/Black/White  
 SBW – Scarlet/Black/White  
 GLR – Gold/Royal  
 SLW – Scarlet/White  
 NTW – Navy/Teal/White  
 WRB – White/Royal/Black  
 NWW – Navy/White  
 ROW – Royal/White  
 SNW – Scarlet/Navy/White  
 WSB – White/Scarlet/Black

### CODE

0118  
 0119  
 0120

### SIZE

ADULT s, m, l, xl  
 YOUTH ys, ym, yl, yxl  
 ADULT Long Sleeve  
 s, m, l, xl

ALSO AVAILABLE IN LONG SLEEVE WITH MATCHING 1X1 RIB CUFF

## PLAYA



- \* Duraweight 100% polyester "Pinstripe" jacquard
- \* Sharp over the shoulder contrast inset
- \* Nakita tape on shoulders
- \* Tricolor ribbed V-neck and coordinated sleeve bands
- \* Flocked Logo

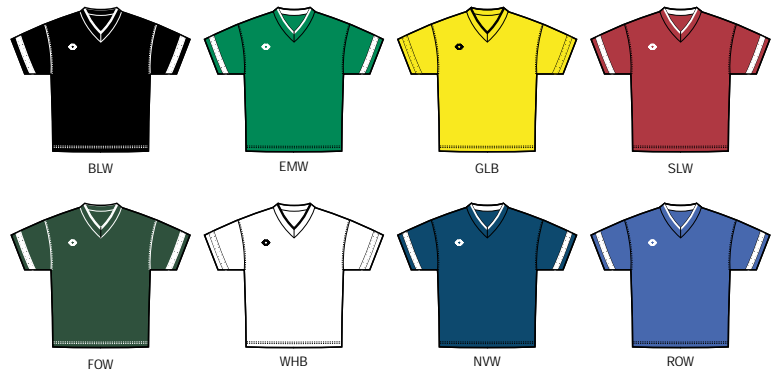


COLORS		CODE	SIZE
BSW – Black/Scarlet/White	NSW – Navy/Scarlet/White	0116	ADULT s, m, l, xl
EBW – Emerald/Black/White	WRB – White/Royal/Black	0117	YOUTH ys, ym, yl, yxl
SBW – Scarlet/Black/White	RBW – Royal/Black/White		
GRW – Gold/Royal/White	WSB – White/Scarlet/Black		
WEB – White/Emerald/Black			

## LEAGUE



- \* Duraweight 100% polyester "Pinstripe" jacquard
- \* Contrast taping on sleeves
- \* Coordinated two colors V-neck collar
- \* Flocked logo



COLORS		CODE	SIZE
BLW – Black/White	FOW – Forest/White	0121	ADULT s, m, l, xl
EMW – Emerald/White	WHB – White/Black	0122	YOUTH ys, ym, yl, yxl
GLB – Gold/Black	NNW – Navy/White		
SLW – Scarlet/White	ROW – Royal/White		

## CHALLENGE



- \* 100% polyester "Tear Drop" jacquard
- \* Sleeveless with piping matching body color
- \* Coordinated two colors V-neck collar
- \* Sharp over the shoulder contrast inset
- \* Flocked Logo



COLORS		CODE	SIZE
RWS – Royal/White/Scarlet	WSR – White/Scarlet/Royal	0127	ADULT s, m, l, xl
SWR – Scarlet/White/Royal	RGS – Royal/Grey/Scarlet	0128	WOMAN ws, wm, wl, wxl
WRS – White/Royal/Scarlet			

## GENOA



- \* 100% polyester "Shiny Eyelet" jacquard
- \* Contrast self fabric bound/sleeve/trim
- \* Ribbed style V-neck collar
- \* Contrasting inset shoulder panel detail
- \* Flocked Logo



COLORS		CODE	SIZE
EMW – Emerald/White	NWW – Navy/White	0113	ADULT s, m, l, xl
SBW – Scarlet/Black/White	WSB – White/Scarlet/Black	0114	YOUTH ys, ym, yl, yxl
FOW – Forest/White	RBW – Royal/Black/White		
SLW – Scarlet/White	WHB – White/Black		
GLR – Gold/Royal	ROW – Royal/White		
WBR – White/Black/Royal	WNS – White/Navy/Scarlet		

## GENOA – WOMEN'S



HIDDEN SHOULDER TAB  
ENABLES SLEEVES  
TO BE ROLLED UP AND  
HELD IN PLACE

- \* 100% polyester "Shiny Eyelet" jacquard
- \* Contrast self fabric bound neck and sleeve trim
- \* Contrasting inset shoulder panel detail
- \* Flocked Logo



COLORS		CODE	SIZE
FOW – Forest/White	ROW – Royal/White	0115	WOMAN
TEW – Teal/White	WHB – White/Black		ws, wm, wl, wxl
GLR – Gold/Royal	SBW – Scarlet/Black/White		
WBR – White/Black/Royal	WNS – White/Navy/Scarlet		
NWW – Navy/White	SLW – Scarlet/White		
WBS – White/Black/Scarlet			

## MONTREAL



- \* 100% polyester "Shiny Eyelet" jacquard
- \* Mitered 1x1 rib V-neck
- \* Sleeveless
- \* Flocked Logo

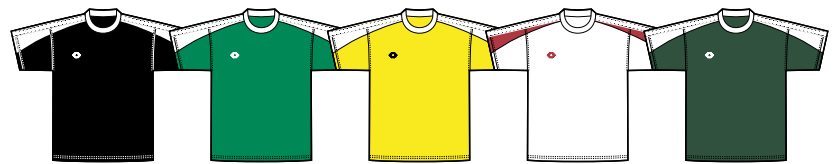


COLORS		CODE	SIZE
EME – Emerald	Nvy – Navy	0126	WOMAN
FOR – Forest	BLK – Black		ws, wm, wl, wxl
TEA – Teal	SLT – Scarlet		
WHT – White	ROY – Royal		

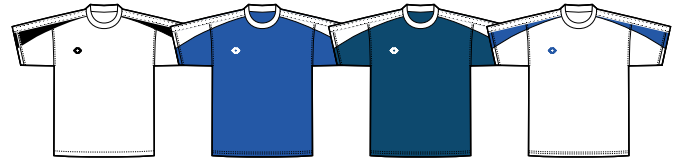
## NAPOLI



- \* Duraweight 100% polyester "Pinstripe" jacquard
- \* Contrast shoulder inset with coordinated tapping trim
- \* Contrasting self fabric crew neck
- \* Flocked Logo



BLW      EMW      GLW      WHS      FOW



WHB      ROW      NVW      WHR

### COLORS

BLW – Black/White  
 EMW – Emerald/White  
 GLW – Gold/White  
 WHS – White/Scarlet  
 FOW – Forest/White  
 WHB – White/Black  
 NVW – Navy/White  
 ROW – Royal/White  
 WHR – White/Royal

### CODE

0123      ADULT s, m, l, xl  
 0124      YOUTH ys, ym, yl, yxl

### SIZE

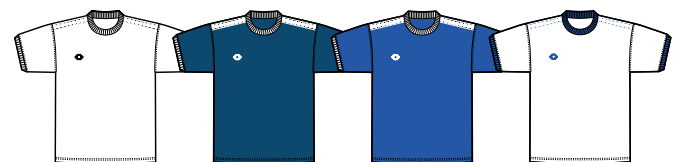
## DIABLO



- \* Duraweight 100% polyester "Pinstripe" jacquard
- \* Coordinated shoulder tapping trim
- \* Contrasting ribbed crew neck and sleeve bands
- \* Flocked Logo



BLW      EMW      GLW      WHS      FOW



WHB      NVW      ROW      WHR

### COLORS

BLW – Black/White  
 EMW – Emerald/White  
 GLW – Gold/White  
 WHS – White/Scarlet  
 FOW – Forest/White  
 WHB – White/Black  
 NVW – Navy/White  
 ROW – Royal/White  
 WHR – White/Royal

### CODE

0129      ADULT s, m, l, xl  
 0130      YOUTH ys, ym, yl, yxl

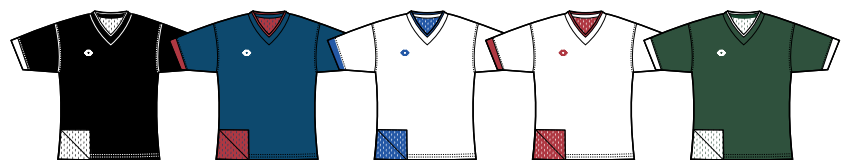
### SIZE

## REVERSIBLE



- \* Duraweight 100% polyester "Pinstripe" jacquard
- \* Coordinated ribbed crew neck and sleeve bands
- \* Reverse in 100% polyester mesh
- \* Flocked Logo

AVAILABLE IN LONG SLEEVES



BLW      NVS      WHR      WHS      FOW



GLS      EMW      ROS      ROW      ROG

### COLORS

BLW – Black/White  
 NVS – Navy/Scarlet  
 WHR – White/Royal  
 WHS – White/Scarlet  
 FOW – Forest/White  
 GLS – Gold/Scarlet  
 EMW – Emerald/White  
 ROS – Royal/Scarlet  
 ROW – Royal/White  
 ROG – Royal/Gold

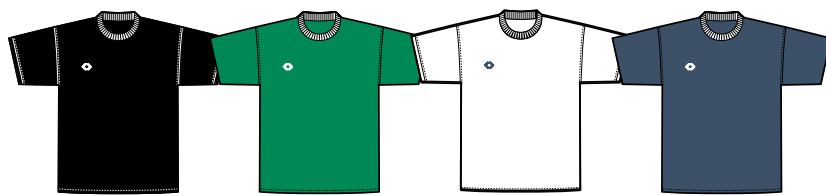
### CODE

0131      ADULT s, m, l, xl  
 0132      ADULT Long Sleeve  
                  s, m, l, xl  
 0133      YOUTH ym, yl, yxl  
 0134      YOUTH Long Sleeve  
                  ym, yl, yxl

### SIZE



## COLUMBIAN SET

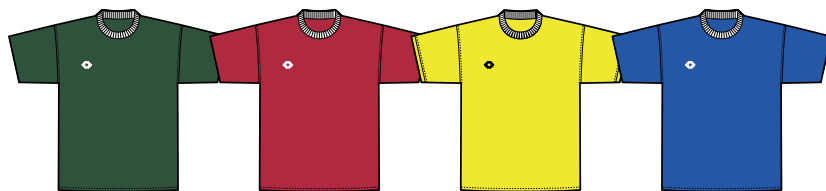


BLK

EME

WHT

NVY

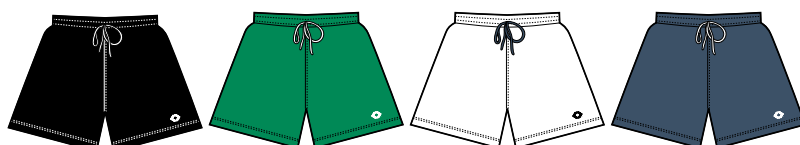


FOR

SLT

GLD

ROY

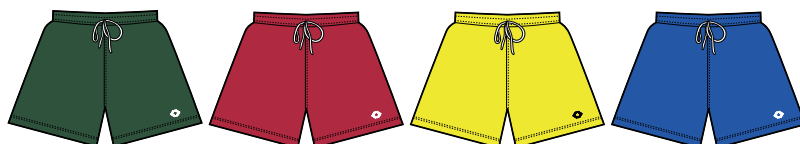


BLK

EME

WHT

NVY



FOR

SLT

GLD

ROY

### JERSEY

- \* 100% polyester "Pin Stripe" jacquard
- \* Coordinated ribbed crew neck
- \* Flocked Logo

### SHORT

- \* 100% polyester "Pinstripe" jacquard
- \* 6" inseam
- \* Outside draw cord
- \* Flocked Logo

### SOCK

- \* Comfortable cotton/acrylic blend

### COLORS

BLK – Black  
 EME – Emerald  
 NVY – Navy  
 WHT – White  
 FOR – Forest  
 SLT – Scarlet  
 GLD – Gold  
 ROY – Royal

### CODE

0165  
 0166  
 0167  
 0168  
 0202  
 0203  
 0204

### SIZE

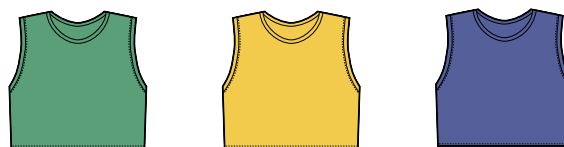
ADULT  
 Jersey s, m, l, xl  
 Shorts s, m, l, xl  
 YOUTH  
 Jersey ym, yl, yxl  
 Shorts ym, yl, yxl  
 Sock 4-6  
 Sock 7-9  
 Sock 10-13

PICK YOUR OWN COLOR OF JERSEY, SHORT AND SOCKS

## MESH SCRIMMAGE VEST



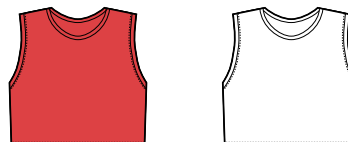
- \* 100% polyester mesh



EME

GLD

ROY



SLT

WHT

### COLORS

EME – Emerald  
 GLD – Gold  
 ROY – Royal  
 SLT – Scarlet  
 WHT – White

### CODE

0173  
 0174  
 0175

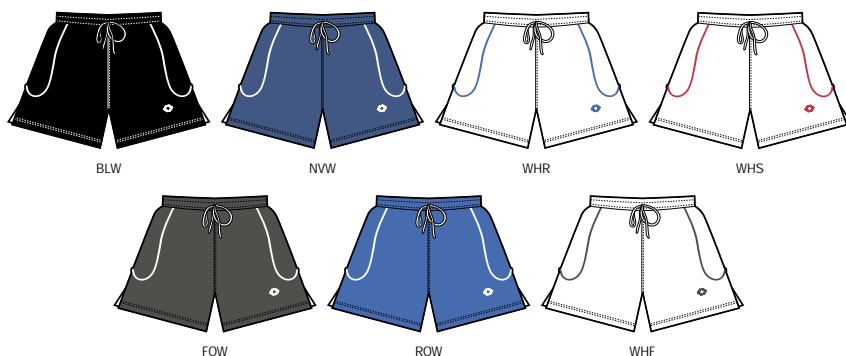
### SIZE

ADULT s, m, l, xl  
 YOUTH ym, yl, yxl  
 CHILD cm, cl, cxl

## VICENZA



- \* 100% polyester "Shiny Eyelet" jacquard
- \* Contrasting curved piping detail on side panel
- \* Sport Gusset inseam construction with 6" inseam
- \* Quick dry sport liner
- \* Side vents
- \* Flocked Logo



### COLORS

BLW - Black/White  
 NVW - Navy/White  
 WHR - White/Royal  
 WHS - White/Scarlet  
 FOW - Forest/White  
 ROW - Royal/White  
 WHF - White/Forest

### CODE

0135 ADULT s, m, l, xl  
 0136 YOUTH ys, ym, yl, yxl

### SIZE

## CRUZEIRO



- \* 100% polyester "Shiny Eyelet" jacquard
- \* Contrasting piping on side seam and leg panel
- \* Sport Gusset inseam construction with 6" inseam
- \* Side vents
- \* Flocked Logo



### COLORS

BLW - Black/White  
 NVW - Navy/White  
 WHB - White/Black  
 BLS - Black/Scarlet  
 FOW - Forest/White  
 ROW - Royal/White  
 SLW - Scarlet/White  
 BLR - Black/Royal

### CODE

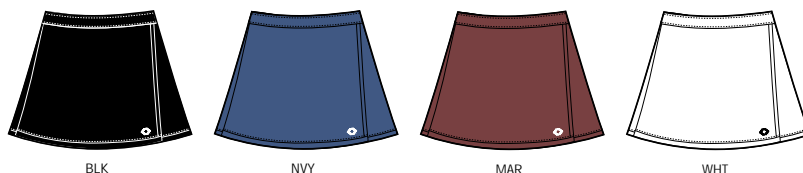
0142 ADULT s, m, l, xl  
 0143 YOUTH ym, yl, yxl

### SIZE

## RIVIERA SKIRT



- \* 100% Twill polyester
- \* Flocked Logo



### COLORS

BLK - Black  
 NVY - Navy  
 MAR - Maroon  
 WHT - White

### CODE

0169

### SIZE

WOMAN  
 ws, wm, wl, wxl

## APOLLO



- \* 100% polyester "Pin Stripe" jacquard
- \* Side vents and logoed tape trim on leg hemming
- \* 6" inseam construction
- \* Quick dry sport liner (also available without liner)
- \* Flocked Logo

**COLORS**

BLW – Black/White  
 NVW – Navy/White  
 WHR – White/Royal  
 EMW – Emerald/White

WHS – White/Scarlet  
 FOW – Forest/White  
 ROW – Royal/White

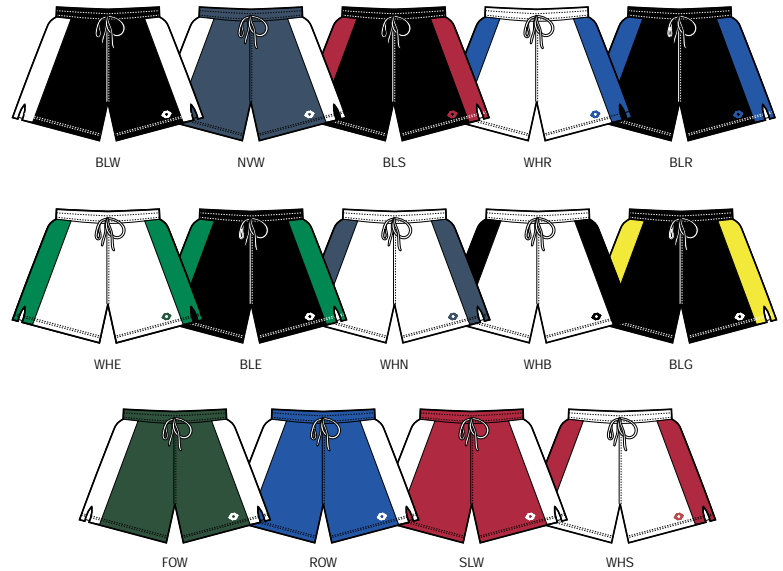
**CODE**

0137  
 0138  
 0139  
 0140  
 0141

**SIZE**

ADULT s, m, l, xl  
 YOUTH ys, ym, yl, yxl  
 W/O LINER:  
 ADULT s, m, l, xl  
 YOUTH ys, ym, yl, yxl  
 WOMAN  
 ws, wm, wl, wxl

## CHAMPIONS



- \* 100% polyester "Pin Stripe" jacquard
- \* Vertical contrasting inset on side seams
- \* Side Vent
- \* Outside drawcord
- \* Flocked Logo

**COLORS**

BLW – Black/White  
 NVW – Navy/White  
 BLS – Black/Scarlet  
 WHR – White/Royal  
 BLR – Black/Royal  
 WHE – White/Emerald  
 BLE – Black/Emerald

WHN – White/Navy  
 WHB – White/Black  
 BLG – Black/Gold  
 FOW – Forest/White  
 ROW – Royal/White  
 SLW – Scarlet/White  
 WHS – White/Scarlet

**CODE**

0146  
 0147

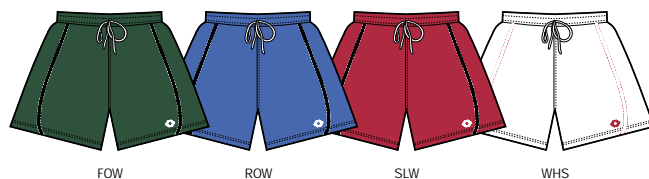
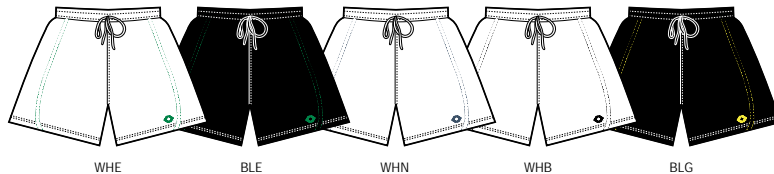
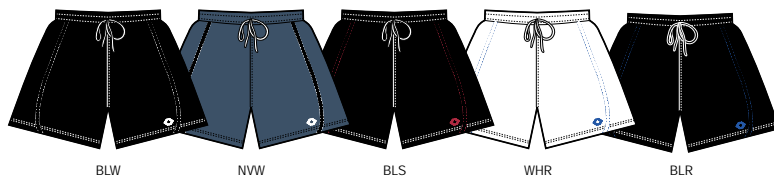
**SIZE**

ADULT s, m, l, xl  
 YOUTH ym, yl, yxl

## BRAZIL



- \* 100% polyester "Pin Stripe" jacquard
- \* Vertical contrasting piping on side seams
- \* Contrasting outside drawcord
- \* Flocked Logo



### COLORS

BLW – Black/White  
 NVW – Navy/White  
 BLS – Black/Scarlet  
 WHR – White/Royal  
 BLR – Black/Royal  
 WHE – White/Emerald  
 BLE – Black/Emerald  
 WHN – White/Navy  
 WHB – White/Black  
 BLG – Black/Gold  
 FOW – Forest/White  
 ROW – Royal/White  
 SLW – Scarlet/White  
 WHS – White/Scarlet

### CODE

0148  
 0149  
 0150

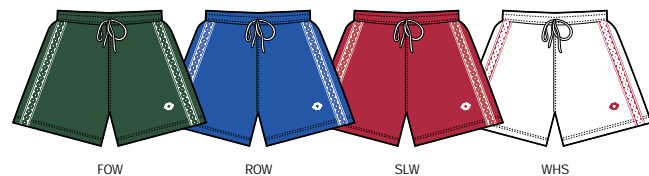
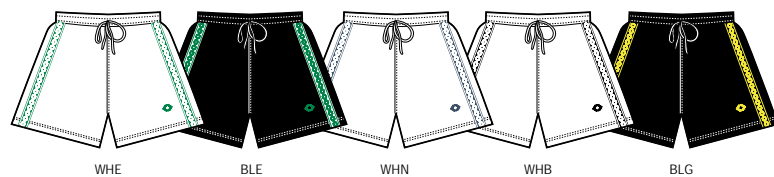
### SIZE

ADULT s, m, l, xl  
 YOUTH ys, ym, yl, yxl  
 WOMAN  
 ws, wm, wl, wxl

## ROMA



- \* 100% polyester "Pin Stripe" jacquard
- \* Vertical contrasting tape trim on side seam
- \* Contrasting outside drawcord
- \* Side vent
- \* Flocked Logo



### COLORS

BLW – Black/White  
 NVW – Navy/White  
 BLS – Black/Scarlet  
 WHR – White/Royal  
 BLR – Black/Royal  
 WHE – White/Emerald  
 BLE – Black/Emerald  
 WHN – White/Navy  
 WHB – White/Black  
 BLG – Black/Gold  
 FOW – Forest/White  
 ROW – Royal/White  
 SLW – Scarlet/White  
 WHS – White/Scarlet

### CODE

0144  
 0145

### SIZE

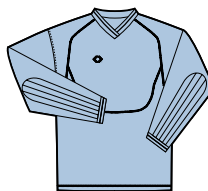
ADULT s, m, l, xl  
 YOUTH ym, yl, yxl



## STRETFORD JERSEY



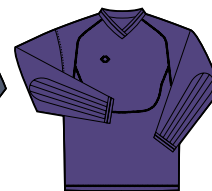
BLK



CHA



NVY



PUR

- \* 100% polyester matte eyelet jacquard fabric
- \* Contrasting flat lock stitching details
- \* Saddle shoulder sleeves with contoured chest panel
- \* Coordinated rib knit V-neck and sleeve cuffs
- \* Internal protective elbow padding
- \* Flocked Logo

### COLORS

BLK – Black/Aluminum  
CHA – Chambray/Black

NVY – Navy/Lime  
PUR – Purple/Black

### CODE

0151

### SIZE

ADULT s, m, l, xl

## CITY SHORT



BLK



NVY

- \* 100% polyester sueded GK dazzle fabric
- \* Contoured hip padding
- \* Side vent
- \* Flocked Logo

### COLORS

BLK – Black  
NVY – Navy

### CODE

0153  
0171

### SIZE

ADULT s, m, l, xl  
YOUTH ys, ym, yl, yxl

## CORDERO GK PANT



- \* Durable 100% polyester pant ideal for use on all surfaces
- \* Hard wearing Cordura reinforces the front legs from above the knee to the hem
- \* Arc padded hips and internal padded knee and shin area
- \* Fitted lower back legs with zippered openings
- \* Grip elastic inner hem with additional foot strap
- \* Flocked Logo

### COLORS

BLK – Black  
BLK – Black

### CODE

0152  
0205

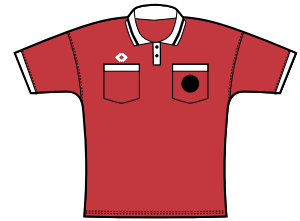
### SIZE

ADULT s, m, l, xl  
YOUTH ym, yl, yxl

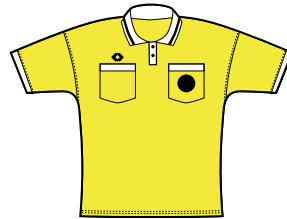
## CONCORDE REFEREE JERSEY



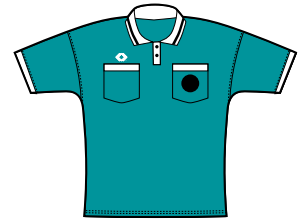
BLK



SLT



GLD



TEA

- \* 100% polyester "Shiny Eyelet" jacquard
- \* Contrasting button placket front
- \* Two front pockets with contrasting white top trim and Velcro tab closure
- \* White knit collar with black trim stripe
- \* Flocked Logo

COLORS		CODE	SIZE
BLK – Black	GLD – Gold	0154	ADULT s, m, l, xl
SLT – Scarlet	TEA – Teal	0172	ADULT Long Sleeve s, m, l, xl

## CONCORDE REFEREE SHORT



BLS



BLG



BLW

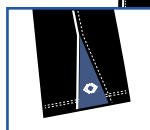
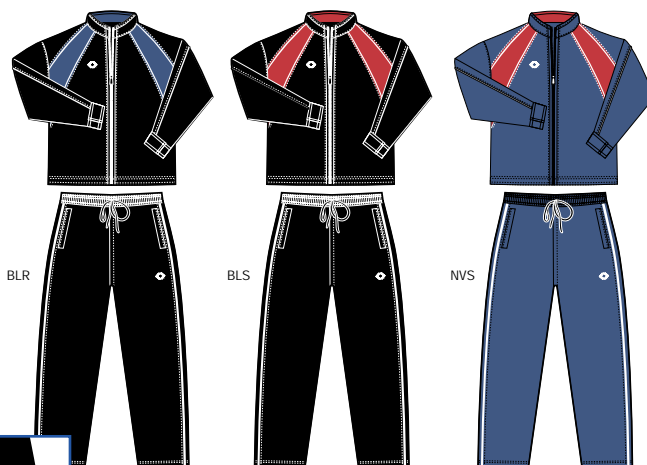


BLT

- \* Durable 100% polyester Short with two side seam pockets
- \* Contrast side seam piping
- \* Two back patch pockets with Velcro tab closures
- \* Side vents
- \* Flocked Logo

COLORS		CODE	SIZE
BLS – Black/Scarlet	BLW – Black/White	0155	ADULT s, m, l, xl
BLG – Black/Gold	BLT – Black/Teal		

## PACIFICA SUIT



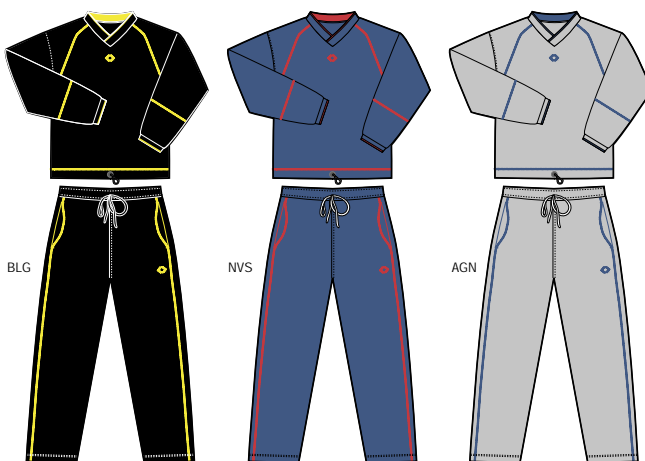
ZIPPERED SIDE LEG OPENINGS WITH CONTRASTING GUSSET

- \* 100% polyester water-repellent micro fibre with polyester mesh lining and draw cord open hem
- \* Inset contrasting side panels and contrasting double needle topstitching
- \* Two piece sleeves with inset contrasting piping
- \* Zippered side leg openings with Flocked Logo
- \* Flocked Logo

COLORS	CODE	SIZE
BLS – Black/Scarlet	0162	ADULT s, m, l, xl
BLR – Black/Royal	0163	YOUTH ys, ym, yl, yxl
NVS – Navy/Scarlet		

## PROTRAINING V-NECK II

### PROTRAINING PANT II



- PROTRAINING JACKET II**
- \* 85/15 polyester/cotton knit
  - \* Three piece sleeve construction
  - \* Contrasting flat lock topstitching
  - \* Crossover V-neck collar
  - \* Draw cord at waist
  - \* Flocked Logo

- PROTRAINING PANT II**
- \* 85/15 polyester /cotton knit
  - \* Side seam pockets
  - \* Contrasting flat lock topstitching
  - \* Inside draw cord at waist
  - \* Flocked Logo

COLORS	CODE	SIZE
BLG – Black/Gold	0160	ADULT Jacket s, m, l, xl
NVS – Navy/Scarlet		
AGN – Athletic Grey/Navy	0161	ADULT Pant s, m, l, xl

## LIBERO



BLG



NVS



WHN

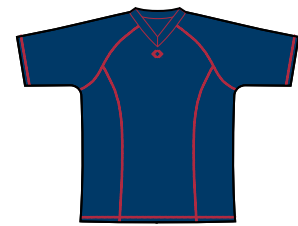
- \* 100% polyester microfibre shirt
- \* Akwatek® permanent moisture management performance
- \* Sport Zip mock neck style
- \* Curved side body inset panels
- \* Contrasting flat lock stitching details
- \* Flocked Logo

COLORS	CODE	SIZE
BLG – Black/Gold	WHN – White/Navy	0156
NVS – Navy/Scarlet		ADULT s, m, l, xl

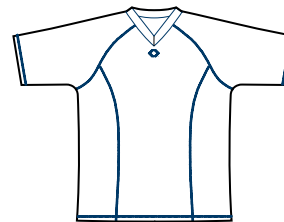
## SCUDETTO



BLG



NVS



WHN

- \* 100% polyester microfibre shirt
- \* Akwatek® permanent moisture management performance
- \* Comfortable athletic V-neck style
- \* Curved side body inset panels
- \* Contrasting flat lock stitching details
- \* Flocked Logo

COLORS	CODE	SIZE
BLG – Black/Gold	WHN – White/Navy	0157
NVS – Navy/Scarlet		ADULT s, m, l, xl



## LIBERO - WOMEN'S

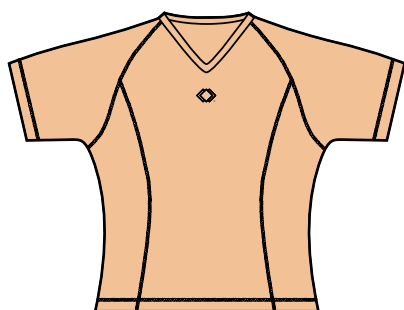


- \* 100% polyester microfibre shirt
- \* Akwatek® permanent moisture management performance
- \* Sport Zip mock neck style
- \* Curved side body inset panels
- \* Flat lock stitching details
- \* Flocked Logo

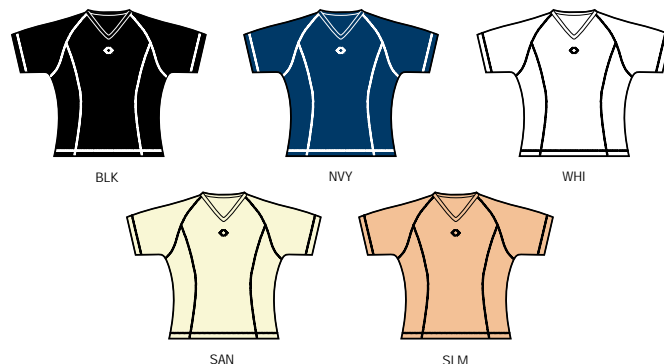


COLORS		CODE	SIZE
BLK - Black	SAN - Sand	0158	WOMAN
NVY - Navy	SLM - Salmon		ws, wm, wl, wxl
WHT - White			

## SCUDETTO - WOMEN'S



- \* 100% polyester microfibre shirt
- \* Akwatek® permanent moisture management performance
- \* Comfortable athletic V-neck style
- \* Curved side body inset panels
- \* Flat lock stitching details
- \* Flocked Logo



COLORS		CODE	SIZE
BLK - Black	SAN - Sand	0159	WOMAN
NVY - Navy	SLM - Salmon		ws, wm, wl, wxl
WHI - White			

## ARIA HOODIE

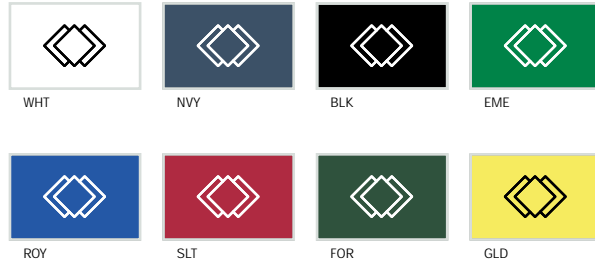
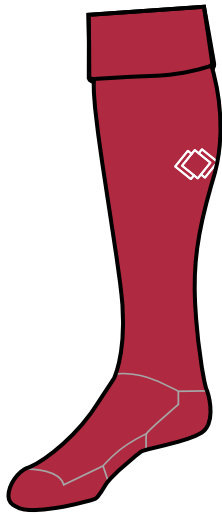


- \* Soft brushed textured polyester knit
- \* Long sleeve hoodie
- \* Contrasting flatlock topstitching
- \* Flocked Logo



COLORS		CODE	SIZE
BLW - Black/White	WHB - White/Black	0164	WOMAN
ICS - Ice Blue/Stadium blue	SAS - Salmon/Stadium blue		ws, wm, wl, wxl
NWW - Navy/White			

## PRIMO SOCKS



- \* Nakita socks are available in three sizes
- \* Comfortable cotton/Acrylic blend
- \* Mid-calf Nakita Logo

COLORS		CODE	SIZE
WHT – White	ROY – Royal	0206	4-6
NVY – Navy	SLT – Scarlet	0207	7-9
BLK – Black	FOR – Forest	0208	10-13
EME – Emerald	GLD – Gold		

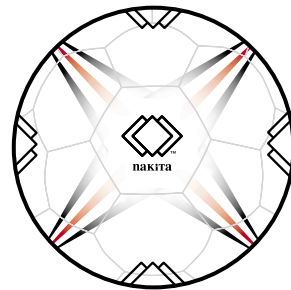
## SOCCER BALLS



### TRAINER

- \* Leatherite PU/PVC Matte finish
- \* Two synthetic and two cotton linings
- \* Very responsive in all weather conditions
- \* Good quality practice ball
- \* Butyl bladder for longer air retention
- \* Hand stitched 32 panels

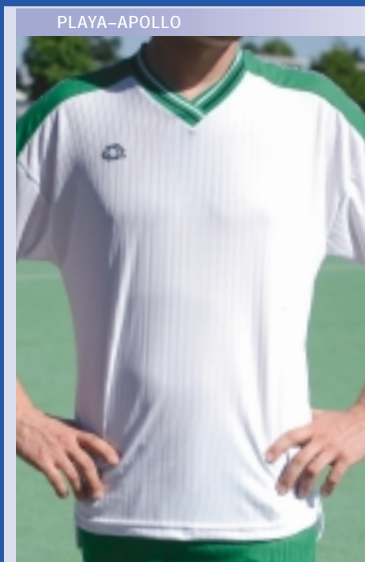
CODE	SIZE
200-5	5
200-4	4
200-3	3



### PLAYER

- \* PU/PVC Dull finish
- \* Two synthetic and two cotton linings specially designed to reduce head injuries
- \* Excellent quality practice ball
- \* Butyl bladder for longer air retention
- \* Hand stitched 32 panels.

CODE	SIZE
201-5	5
201-4	4
201-3	3



Deportivo Jersey  
Vicenza Shorts



Genoa Jersey  
Cruzeiro Shorts



Napoli Jersey  
Roma Shorts



Playa Jersey  
Apollo Shorts



Manchester Jersey  
Brazil Shorts



PRICE \$1.75 CAN

For more information, contact

**NAKITA SPORTS LTD – HEAD OFFICE**  
Suite 201 – 25 East Sixth Avenue  
Vancouver, British Columbia  
Canada V5T 1J3

TEL 604.876.7878 FAX 604.876.7873

TOLL FREE **1.866.4NAKITA (625482)**

EMAIL [info@nakitasports.com](mailto:info@nakitasports.com)

[www.nakitasports.com](http://www.nakitasports.com)